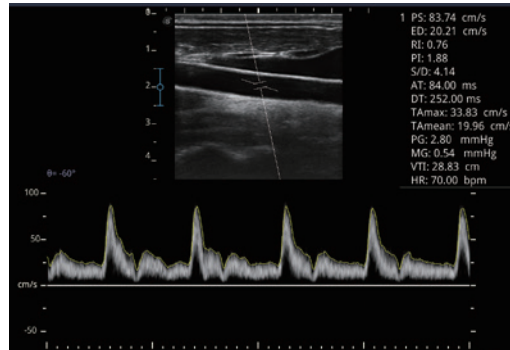
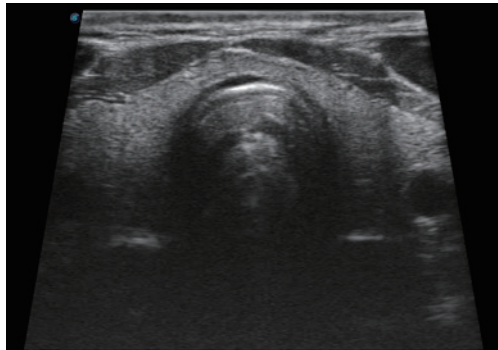
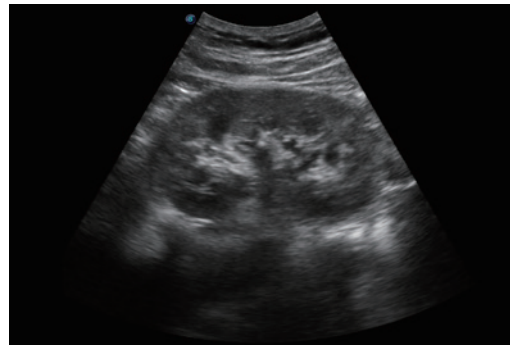
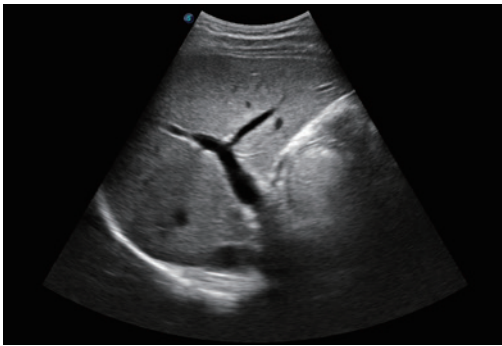


# SonoScape

**E1**, as a new hand carried BW ultrasound model, is equipped with complete functions which enhances its competitiveness among entry level ultrasound models. It not only provides satisfying image quality but also brings users a smoother workflow experience.



# Suited to Your Needs



## Efficient Diagnosis

- $\mu$ -Scan, Speckle Reduction & Edge Enhancement
- Spatial Compound Imaging
- PIH - Pure Inversion Harmonic
- Wide Scan - Enlarged Image Area
- PW Doppler
- Chroma - Highlight Image Details
- B Steer for Linear Probe

## Ergonomic Designs

- Up to 2 Transducer Ports
- Light Weight and Compact
- 15.6 inch Anti-flickering HD LED Screen
- Tilting Monitor Angle Adjustment
- Backlit Keyboard and Intelligent Panel
- Long-lasting Battery for 90mins

## Ease of Use

- Quick Boot Up
- Auto Brightness Adjustment
- Auto Image Optimization
- Auto IMT
- Auto Trace

## Equipped Accessories

- Wi-Fi and Bluetooth Available
- DICOM
- 500GB Hard Disk
- Height Adjustable Trolley
- Durable, Carry-on Site Suitcase

**SonoScape**

SonoScape Medical Corp.

2F, 12<sup>th</sup> Building, Shenzhen Software Park Phase II, Keji Middle 2<sup>nd</sup> Road, Nanshan District, Shenzhen 518057, Guangdong, China  
Tel: +86-755-26722890 Fax: +86-755-26722850  
Email: market@sonoscape.net www.sonoscape.com